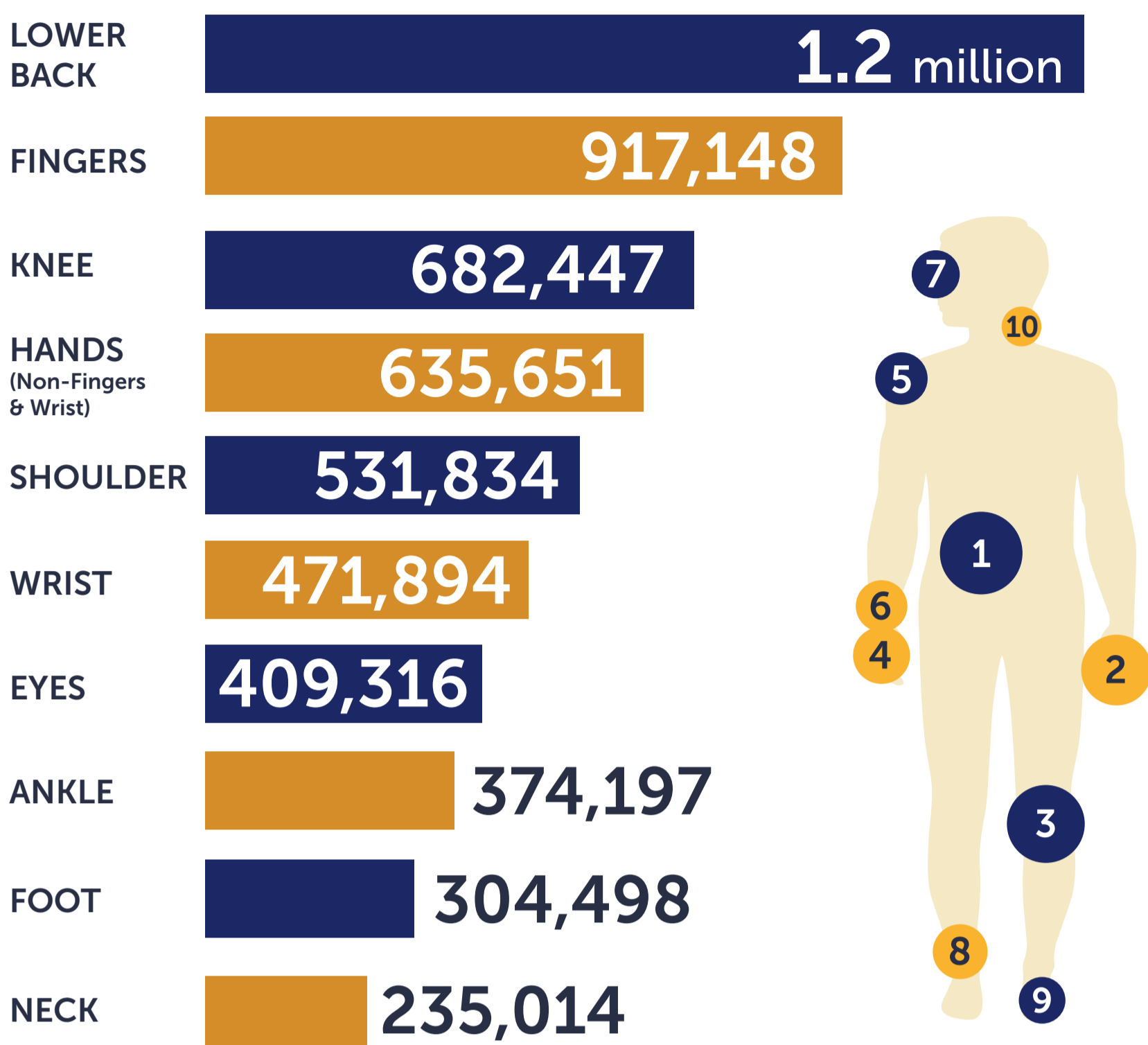


WORKPLACE INJURIES AND ACCIDENTS INFOGRAPHIC

Presented by the Law Office of Robert A. McLaughlin

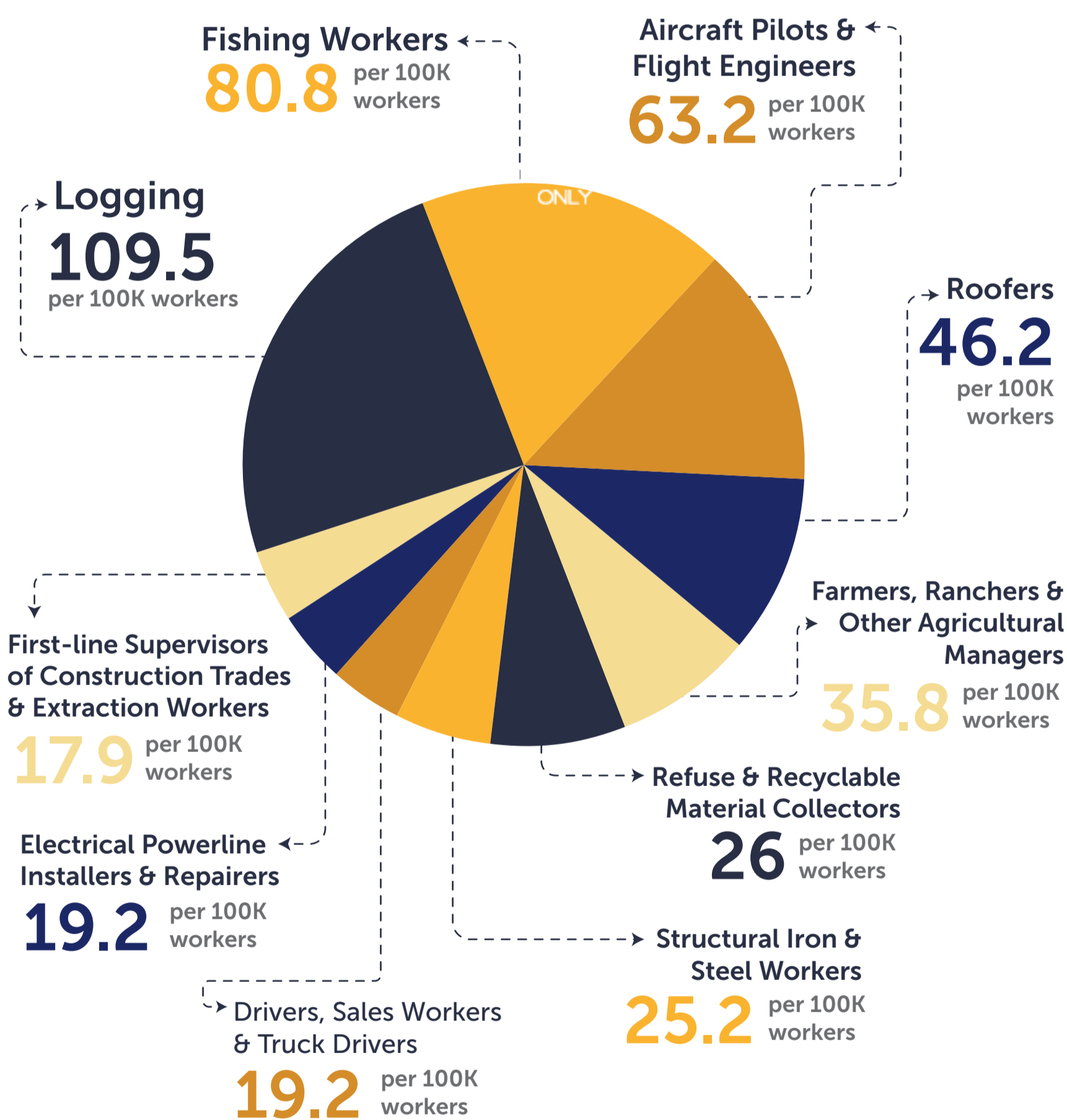
Most Common Types of California Work Injuries

2000 - 2014



Most Dangerous Jobs in United States in 2014

(fatal accidents per 100,000 workers)



Injured in a Work Accident in San Diego County?
Rebuild Your Life.

Call the Law Office of
Robert A. McLaughlin
866-324-9558



Toll Free
CALIFORNIA ONLY 866-324-9558
LOCAL 619.325.0969

Source: State of California, Division of Workers' Compensation, Workers' Compensation Information System (WCIS), "Workers' Compensation Claims By Part Of Body—Detailed"
http://www.dir.ca.gov/dwc/wcis/WCIS_Reports.html

Source: Bureau of Labor Statistics, National Census of Fatal Occupational Injuries in 2014 (Preliminary Results).
<http://www.bls.gov/news.release/pdf/cfoi.pdf>